

DISENCHANTED! ON TOUR

QUEENS THEATRE
OCTOBER 11 & 12, 2024

BENNINGTON THEATRE
OCTOBER 18, 2024

SIEMINSKI THEATER CULTURAL ARTS CENTER
OCTOBER 19, 2024

F.M. KIRBY CENTER FOR THE PERFORMING ARTS
OCTOBER 23, 2024

PITTSBURGH CULTURAL TRUST
OCTOBER 24, 2024

AVENTURA ARTS & CULTURAL CENTER
FEBRUARY 13 & 14, 2025

MINIACI PERFORMING ARTS CENTER
FEBRUARY 15 & 16, 2025

TAMPA, FL
FEBRUARY 28 – MARCH 2, 2025

ORLANDO, FL
MARCH 7 – 9, 2025

PEMBROKE, NC
MARCH 21, 2025

COPPELL, TX
MARCH 28 & 29, 2025

TORRANCE, CA
MAY 3, 2025

SUNSET CULTURAL CENTER
MAY 9, 2025

Marcie Gorman & MNM Theatre
PRESENT

DISENCHANTED!

THE HIT MUSICAL COMEDY

Book and Music by
Dennis T. Giacino
Developed by
Fiely Matias



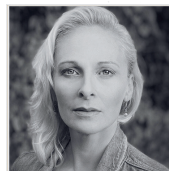
And they lived *happily ever after...*
Well, not exactly



S.J.
Nelson



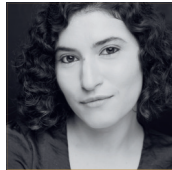
Ashley
Rubin



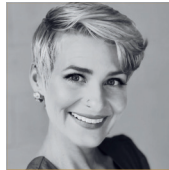
Aaron
Bower



Anneliese
Moon



Stephanny
Noria



Jordan
Gonzalez



Katrice
Jackson



Kat
Gold



Eileen Lymus
Williams

THE CAST

Snow White.....S.J. NELSON
Cinderella.....ASHLEY RUBIN
Sleeping Beauty.....AARON BOWER
Mulan.....ANNELIESE MOON
Pocahontas/Princess Badroulbabour.....STEPHANNY NORIA
Little Mermaid/Belle.....JORDAN GONZALEZ
The Princess Who Kissed the Frog.....KATRICE JACKSON
Rapunzel.....KAT GOLD
Swing.....EILEEN LYMUS WILLIAMS

UNDERSTUDIES

Snow White/Hua Mulan/Sleeping BeautyKAT GOLD
Pocahontas/Princess Badroulbabour/Rapunzel.....ANNELIESE MOON
Cinderella.....JORDAN GONZALEZ
Little Mermaid/Belle.....KATRICE JACKSON
Princess Who Kissed The Frog.....EILEEN LYMUS WILLIAMS

PRODUCTION STAFF

Executive Producer.....MARCIE GORMAN
Producer.....JONATHAN VAN DYKE
Technical Director.....JB GREEN
Booking Agent/General Manager.....KRISTEN ERNST
Production Manager.....JORDON ARMSTRONG
Public Relations/MarketingKEITH SHERMAN & ASSOCIATES
Graphic Artist/Program Book.....MARC CHRISTOPHER
Social Media Manager.....DAISY MCCARTHY TUCKER
Casting.....WOJCIK CASTING

THE CREATIVE TEAM

Director/Choreographer.....JONATHAN VAN DYKE
Music Director.....RYAN CROUT
Scenic/Lighting Designer.....JORDON ARMSTRONG
Dance Captain/ Associate Director.....ASHLEY RUBIN
Props Designer.....MARYBETH SCHUETTLER
Costume Designer.....DAISY MCCARTHY TUCKER
Wig Designer.....JUSTIN LORE/TEASE & FLOOF LLC
Audio Engineer.....KYLEE TAYLOR
Stage Manager.....FRANK MASTRAS
Assistant Stage Manager.....KATIE GORDON

THE BAND

Piano.....RYAN CROUT
Bass.....RUPERT ZIAWINSKI
Percussion.....ZACH LEVINE

THE MNM SCENIC SHOP

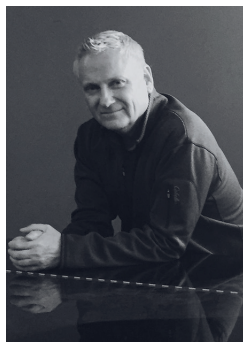
Shop Foreman.....JACOB ALTMAN
Carpenters.....ABEL DESIR, MARYBETH SCHUETTLER, NOAH GRANGER
Painters.....SYDNEY KAYE, MARYBETH SCHUETTLER



THE CREATIVES BEHIND THE MAGIC

DENNIS T. GIACINO (*Book, Music, & Lyrics*): A full member of the Dramatists Guild of America, Giacino created and wrote the book, music, and lyrics for the Off-Broadway musical hit *Disenchanted!* The show has played worldwide on five continents, garnered a 'Best Of/'Unforgettable Theatre Experiences' pick from Playbill, and is a 4-time nominee for New York City theatre awards (including Outer Critics Circle nomination for 'Outstanding New Off-Broadway Musical', Off Broadway Alliance for 'Best New Musical,' and two Lortel Awards nominations). *DIS!*, as the show is affectionately known, has been recognized worldwide with awards for 'Best Musical' at the MINDIE Awards in Italy, the New Jersey Playwright's Competition, the MCFTA Awards in Midland MI, the Renna Hunter Awards in Topeka KS, and nominations for 'Best Musical' at both the Premios Soberano Awards in the Dominican Republic, and Premios ACE Awards in Argentina. Giacino continues to work on new musicals with frequent collaborator (and Off-Broadway director of *Disenchanted!*) Fiely Matias. In addition, Giacino has directed the Pacific Northwest Tour of *Disenchanted!* and co-produced the *Disenchanted!* 10th Anniversary Studio Recording.

FIELY MATIAS (*Developer*) co-created and directed *Disenchanted* Off-Broadway. As a member of the Stage Directors and Choreographers Society, he has directed countless musicals and comedies over the past 25 years, including over 20 international Fringe Theatre Festival Productions. He is also a long-time member of Actors Equity Association, and has performed in theatres throughout the United States, Canada, and internationally. He originated the role of the Asp in *Annie 2* at the Kennedy Center in Washington, DC and has toured throughout North America with IMAGO Theatre Mask Ensemble.



DENNIS T. GIACINO



FIELY MATIAS



Disenchanted!

THE HIT MUSICAL COMEDY

Book and Music by
DENNIS T. GIACINO
Developed with
FIELY MATIAS

Technical Director
JB GREEN

Executive Producer
MARCIE GORMAN

Production Manager/Scenic, Lighting, & Sound Designer
JORDON ARMSTRONG

Sound Engineer
KYLEE TAYLOR

Costume Designer
DAISY MCCARTHY TUCKER

Stage Manager
FRANK MASTRAS

Props Designer
MARYBETH SCHUETTLER

Wig Designer/Rental
JUSTIN LORE/TEASE & FLOOF LLC

Booking Agent/General Manager
KRISTEN ERNST

Assistant Stage Manager
KATIE GORDON

Casting by
WOJCIK CASTING

Music Director
RYAN CROUT

Director/Choreographer/Co-Producer
JONATHAN VAN DYKE

Disenchanted! is presented by special arrangement with
Broadway Licensing Global. (www.broadwaylicensing.com)

MUSICAL NUMBERS

ACT ONE

1. One More Happy Ever AfterSnow White, Cinderella, Sleeping Beauty
2. InsaneBelle, Cinderella, Sleeping Beauty
3. Without the GuyMulan
4. Two LegsThe Little Mermaid, Cinderella, Snow White
5. Big TitsSnow White, Cinderella, Sleeping Beauty, Pocahontas
6. HonestlyPocahontas
7. FinallyThe Princess Who Kissed the Frog & The Princesses

Intermission

ACT TWO

8. Entr'Acte /Finally RepriseThe Band
9. Not Vone Red CentRapunzel, Snow White, Cinderella
10. Secondary PrincessPrincess Badroulbador
11. All I Wanna Do Is EatThe Princesses
12. A Happy TuneSnow White, Cinderella, Sleeping Beauty
13. PerfectSleeping Beauty and The Princesses
14. Once Upon A TimeThe Princesses
15. One More Happy Ever After RepriseThe Princesses

Performance and Rehearsal Musical Tracks provided by Right On Cue Services
www.RightOnCueServices.com

NOTE TO AUDIENCE:

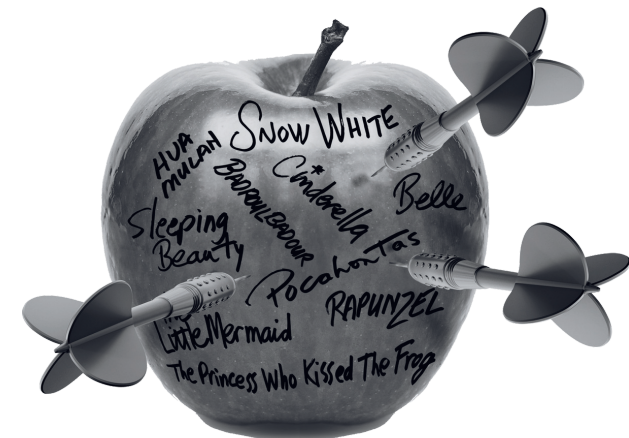
The videotaping or audio and/or visual recording of this production is a violation of United States Copyright Law and an actionable federal offense.

WHO'S WHO BACKSTAGE (CONTINUED)

KYLEE TAYLOR (*Sound Engineer*) is a Sound Engineer and Lighting Designer from Orlando, Florida. She is currently a Production Coordinator for The Imagination House as well as the Stage Manager for BlueLaLa Entertainment. Some past credits include VarieTEASE XX with The Imagination House and BlueLaLa Entertainment (FOH Engineer/Stage Manager), Pete the Cat at Orlando Family Stage (FOH Engineer), and Orlando Fringe's FestN4 (Technical Director).

DAISY MCCARTHY TUCKER (*Costume Designer/Social Media Manager*) Daisy started research for *Disenchanted* as an infant. Princesses have always been an obsession for her. In her career she has designed for Disney, Freeform, Sea World and Marriott Hotels over the years. She's been grateful to create custom wedding gowns and costumes for clients across the globe. Helping actors tell their story is a true honor. She is thrilled to be on the team bringing this raucous show to audiences around the country.

JONATHAN VAN DYKE (*Director/Choreographer/Producer*) began his relationship with *Disenchanted* as the Casting Director for the out of town Off Broadway tryout at The Straz Center for the Performing Arts. As a director/choreographer, his work includes *Pippin*, *I Love a Piano*, *Beehive*, *Breaking Up Is Hard To Do* (w/Barry Pearl and Christine Pedi) *Beehive*, *Cinderella*, *Disaster*, *Forum*, *Closer Than Ever*, *The Hot Shoe Shuffle*, *My One and Only* *The Savannah Sipping Society*, *Boeing, Boeing* and recently directed and choreographed *ShBoom* for The Laguna Playhouse, ushering in their 100th season. He will be directing *Steel Magnolias* for Surflight Theatre's 75th anniversary season. He has helmed productions of *Disenchanted* at The Kravis Center PAC and The Studio at Mizner Park. A member of The Dramatists Guild, Jonathan is the author of the award winning play *Spring at the Willowbrook Inn*, the 80's musical *Totally Electric* debuted at the Duplex in NYC, *Holiday Inc* has become a seasonal favorite after it's debut at The Straz Center PAC and has since been adapted to a children's book released in 2023. He is founder of Van Dyke Productions which specializes in custom entertainment for corporate events and commercial production.



WHO'S WHO BACKSTAGE (CONTINUED)

JB GREEN (*Technical Director*) has been proud to serve as an actor and technician professionally for over 20 years. Having pursued a BFA in Theatre at Massachusetts University in Salem he has since worked around the country building sets, acting and setting schedules for such shows as Grease (MNM), Thrill Me (Island City Stage), Pied A Terre (JSA Productions), Kinky Boots (Slowburn Theatre Co), The Cemetery Pub (Pigs do Fly), The Sound Inside (Boca Stage), The Odd Couple (Boca Stage), Disenchanted (MNM), Which Way to the Stage (Island City Stage), Five Guys Named Moe (MNM), 'Unhinged' (Reel Theatre Productions), 'Head Over Heels' (Slowburn), Grand Horizons (Boca Stage), several interactive theatre events and an Escape Room.

MARCIE GORMAN (*Executive Producer*) has been a driving force in south Florida theatre for the last ten years. She began her theatrical career studying at the American Academy of Dramatic Arts and The Fiorello H. Laguardia High School of Performing Arts in New York City. A classically trained soprano, Marcie attended the University of Florida, and performed on various stages before she turned her interest to production. As an entrepreneur, business owner, and philanthropist she has offered her experience and expertise to multiple organizations and theatrical Broadway properties including the original production of Hairspray, Company (w/Raul Esparza), The Producers, Gypsy (w/Patti LuPone), and Little Shop of Horrors. She has served on multiple boards, including the Dreyfoos School for the Arts and Communities in Schools of Palm Beach County; she has spearheaded multiple projects and events for numerous charitable organizations; and has won several prestigious volunteer awards. Marcie is a Founder Member of the Kravis Center, and a member of their Education Committee. Outside of her theatrical life, Marcie was CEO of two Weight Watchers Franchises, managing and often mentoring over 300 employees, and serving over 12,000 members per month. Marcie currently serves as Producing Artistic Director and CEO of MNM Theatre in Palm Beach, Florida.

JUSTIN LORE/TEASE & FLOOF LLC (*Wig Design*) (AEA), Owner/Designer Tease & Floof, Theatrical Wig Design (@teaseandfloof) has designed 4 productions of *DISENCHANTED!* - 3 with MNM Theater. Other Credits: *HELLO, DOLLY!* and *GYPSY* both starring Jodi Benson, *THE LITTLE MERMAID* starring Delaney Benson, 70+ Regional Theatre Productions in the past 5 years including original designs at Orlando Shakespeare Theatre, The Wick Theater, Theatre West End, Theatre at St. Luke's *ENCORE* and multiple productions at Sea World, Orlando. Justin is the resident Wig Designer at The University of Tampa. Currently, contestant Suzie Toot is wearing Justin's designs on *RU PAUL'S DRAG RACE SEASON 17* (MTV).

FRANK MASTRAS (*Stage Manager*) BA Theatre: Georgia College 2023. Regional Credits: Stagedoor Manor, SM (The Lightning Thief, Ride the Cyclone, High School Musical, Bright Star, The Prince of Egypt, Lend Me A Tenor), SurfFlight Theatre, ASM (Grumpy Old Men, Dracula: A Comedy of Terrors, A Christmas Story), Maples Repertory Theatre, ASM (Great American Trailer Park Musical, The Nerd, Hank Williams: Lost Highway). Thank you to Mike, Sally, Maddie, and Jonathan for their love, support, and for always believing in him. He finally gets to live out his Disney Princess fantasy! IG: @frankiemastras

WHO'S WHO ON STAGE

AARON BOWER (*Sleeping Beauty*) has traveled the country in 5 national tours. Most recently in Little Women as Marmee. A Kansas City native but has called south Florida her home for the past 15 years. She's worked at The Maltz Jupiter Theatre, The Wick, MNM, Stage Door and others. She's loves to sing and perform in Cabarets around the region and is an artist focusing on acrylics on canvas and murals. Some favorite roles, Reno in Anything Goes, Domina in Forum, Fairy Godmother in Cinderella, Tanya in Mama Mia, and Frau Kost in Cabaret. She thanks Jonathan VanDyke and Marcie Gorman for all their support as well as her family Husband Ed, kids Lily and Fletcher and her new best friend, granddaughter Violet! Thank You.

KAT GOLD (*Rapunzel*) is delighted to be back with the Princess Posse and this team after working on the prior productions of *Dis!* in South Florida. Kat is a Filipino-Portuguese actress based out of Rhode Island. BFA Musical Theatre from UWF. Select Credits: 42nd Street (Theatre By The Sea), La Cage Aux Folles (Arizona Broadway Theatre), Chicago (Winnepesaukee Playhouse, NHTA Nomination), Hedwig and the Angry Inch (Oltre Theatre Co.), Nine (Broward Stage Door, Silver Palm Award Winner/ Carbonell Award Nomination). Everything is dedicated to Sydney and Erick. @thegoddesskat

JORDAN GONZALEZ (*Little Mermaid/Belle*) is a South Florida native and attended Dreyfoos School of the Arts. She went on to get her BFA in Musical Theater from Belmont University. She performed for Viking Ocean Cruises and American Queen Voyages, where she produced her first one woman show American Sweetheart; Some of her favorite roles include Rizzo in Grease and Cinderella in Disenchanted. She is thrilled to be joining MnM once again this time as not one, but two new princesses! Jordan is a proud vocal coach and children's director. You can learn more about Jordan here: @artsfirststudios | jordan-gonzalez.com | artsfirststudios.com

KATRICE JACKSON (*The Princess Who Kissed the Frog*) is ecstatic to be a part of the princess posse in her second tour! She is extremely honored to portray The Princess Who Kissed The Frog. She believes it is so important for young black women not only to see people who look like them on stage, but to see them celebrated as well and she hopes to inspire other young black women to continue to chase their dreams! Previously: Jesus Christ Superstar National Tour (SoulSinger/Ensemble & Mary Magdalene cover) Instagram: @katricejackson5

ANNELIESE MOON (*Mulan*) is an Orlando-based singer, actress, and musician. She is thrilled to return to the kingdom after being named Critic's Pick by the Orlando Sentinel for her run as Mulan/ Pocahontas/ Badroulbador in Disenchanted at Theatre West End. Other credits include: The Spitfire Grill (Laguna Playhouse), 25th Annual... Spelling Bee (Significant Productions), Shout! The Mod Musical (Winter Park Playhouse), Once (Theatre West End). Anneliese can also be found performing in various roles at Universal Orlando Resort and Walt Disney World. Many thanks to Tyler and her family, especially Elina for being a superior being.

WHO'S WHO ON STAGE (CONTINUED)

STEPHANNY NORIA (*Pocahontas, Princess Badroulbador*)

"Noah" is a Venezuelan-Lebanese performer who is delighted to be back with the Princess Posse. Favorite credits: In the Heights (Nina, Invision Theatre), Anastasia (Anya US/Ensemble, Slow Burn Theatre), The Play that Goes Wrong (Annie, Colony Theatre), RENT (Maureen, Lakeworth Playhouse), 25th Annual Spelling Bee (Olive, Quincy Music Theatre), Disenchanted! (Pocahontas/Badroulbador, Disenchanted SOUTH FL Bios MNM Theatre), Spring Awakening (Wendla, Slow Burn Theatre). It's always a dream to work with her fiancé and favorite MD, el Ryan, thank you for your support para siempre. Mami, al infinito y mas alla! Thank you Jonathan & Marcie for this opportunity. @noahmila

S.J. NELSON (*Snow White*) is elated to be making her National Tour Debut with Disenchanted! Some of her most recent credits include Maureen in RENT at The Carnegie and Queenie in The Wild Party at CCM. She is a recent graduate of The College-Conservatory of Music and gives her many thanks to her parents, The Collective Talent Agency, Jonathan, Marcie, and of course, Anna and Zach.@sarahjanelson, sj-nelson.com

ASHLEY RUBIN (*Cinderella/Dance Captain/Associate Director*) is thrilled to pop back into her glass slippers as her favorite Princess, Cinderella, after portraying her in MNM Theater's hit run at the Kravis Center, and Swinging the original Off Broadway Workshop Production 11 years ago at the Straz Center! National Tour Grease (Frenchy) Off Broadway, I'll Say She Is: The Lost Marx Brothers Musical; Favorite Regional - Three productions as Tanya in Mamma Mia with Prather, Winnepesaukee Playhouse, and Interlakes Theater. Victor/Victoria (Norma) with Broward Stagedoor. White Christmas (Rita/Rhoda) with Surflight Theater, The Wick, Slowburn, and Mountain Theater Company @AshleyRubin1

EILEEN LYMUS WILLIAMS (*U/S Princess Who Kissed The Frog*) holds her bachelors degree in Elementary Education. She is a headline performer in her One-Woman show, Queen of Hearts, has performed with Royal Caribbean International, Carnival Cruise Lines, and Norwegian Cruise Lines, including lead roles in Hairspray, Priscilla Queen of the Desert, Cinderella, Dreamgirls, Agatha Christie's The Mousetrap, in KATONGA at Busch Gardens Tampa, Blues Brothers Rhythm and Blues Revue at Universal Studios Orlando, commercials for Biospine, Calloway Resort, Blue Tiger Seated Elliptical, Kelton Cookware, Remedy Massage System, Voice-Overs for Cruise Director intros, HSN demo model and with several regional theaters, production companies, bands nationwide and abroad.



WHO'S WHO BACKSTAGE

JORDON ARMSTRONG (*Production Manager/Scenic, Lighting, & Sound Design*) is a South Florida-based actor, designer, and technician who has been working with MNM Theatre Company for the last five seasons. He graduated with his MFA in Acting from Florida Atlantic University and is thrilled to be working on this amazing show as a Managing Director, Set Designer, Carpenter, etc., with a phenomenal (and equally many-hat-wearing) team. He is also one of the driving forces (along with JB Green) behind MNM Builds. He wants to thank Marcie for her dedication to theatre and to making sure that local South Florida theatre artists have a home and an artistic family. He would also like to thank his wife, Kate, for always supporting him and putting up with the ridiculous schedule that comes with professional make-believe.

RYAN CROUT (*Musical Director*) is excited to be back Music directing Disenchanted! His recent credits include: Music Director/Ensemble in Anastasia (Slow Burn), Dr. Pat in The Witches of Eastwick (Slow Burn), Robert/Thomas in The Play That Goes Wrong! (Colony Theater), Mr. Krabs in SpongeBob the Musical (Slow Burn), Music Director in The Prom (Slow Burn), Music Director for Disenchanted (MNM Theatre), Chef Louis/Ensemble in Little Mermaid (Slow Burn), and Inspector Kemp/Hermit in Young Frankenstein (Loxen). He would like to thank his parents for their unbelievable love and support and his wonderful fiancée, Noah, for being such an incredible partner, te amo habibi. @crizzycrout

KRISTEN ERNST (*General Manager/Booking Agent*) has been actively working in the entertainment industry for over 3 decades. Performer, Choreographer, Casting Director, Artist Manager, Programming Director, Consultant, Booking Agent, Tour Manager, and Producer are several hats that she has worn. Kristen owns KMEntertainment, a Production Company offering a unique skill set which spans all layers of Artistic Direction and General Management. The Power of 3 Producing, Programming, and Booking Live Entertainment, KME focuses on booking and producing live events, specializing in delivering audiences world class artists and concierge style advancing of each performance contract.

KATIE GORDON (*Assistant Stage Manager*) is excited to join the MNM Disenchanted national tour! Her history in production includes notable productions at The Lake Worth Playhouse, Dr. Phillips, Stagedoor Manor, Elon University, and The Wick. She extends heartfelt gratitude to her unwavering support system: her loving family and her fiancé