
The Rose and Alfred Miniaci Performing Arts Center

Affiliated Venue of Broward Center for the Performing Arts

at

Nova Southeastern University

3100 Ray Ferrero, Jr. Boulevard

Fort Lauderdale, Florida 33314

www.miniacipac.com | www.browardcenter.org

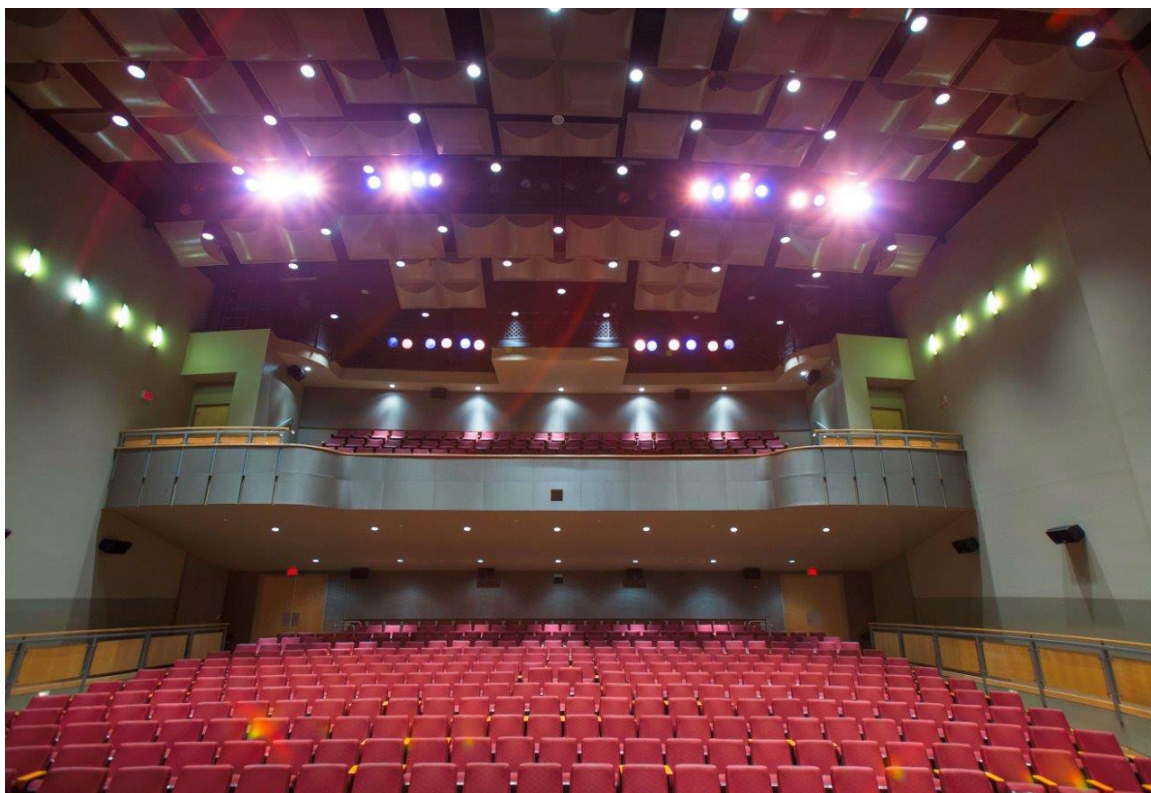
GENERAL & TECHNICAL INFORMATION RIDER

The Rose and Alfred Miniaci Performing Arts Center (MPAC) is a non-union house.



MINIACI PERFORMING ARTS CENTER

Technical Information Rider



STAFF CONTACT INFORMATION

General Manager
Technical Director
Event Manager
Technical Supervisor

Shannon S. Hall
Preston Bircher
Ayana Vail
Ember Williams

shall@BrowardCenter.org
pbircher@BrowardCenter.org
avail@BrowardCenter.org
emwilliams@BrowardCenter.org

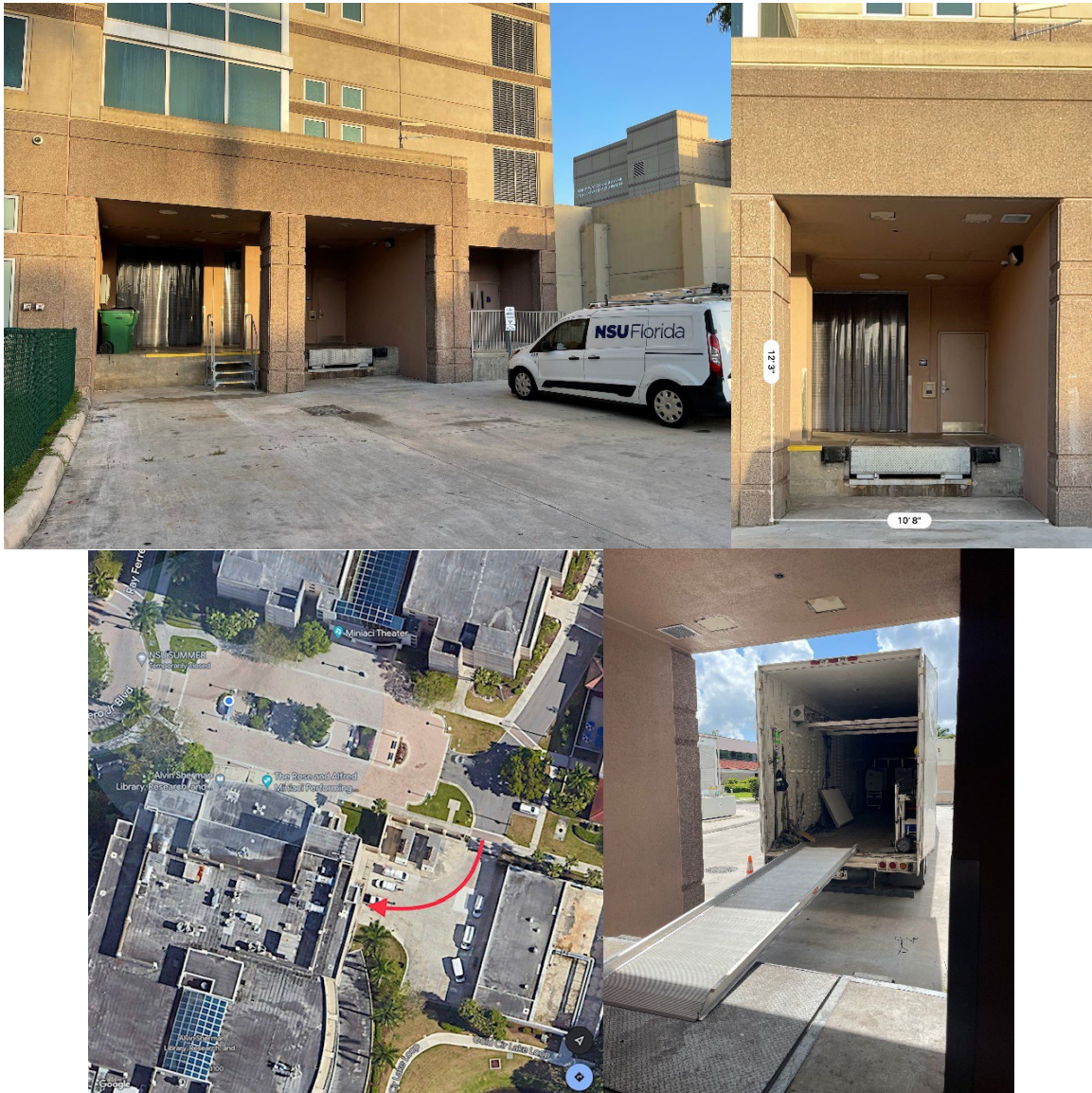
954.262.4540
954.262.5486
954.262.5479
954.262.5430

MINIACI PERFORMING ARTS CENTER

Technical Information Rider

LOADING ENTRANCE INFORMATION

Loading dock located at the N.E. corner of the ALVIN SHERMAN LIBRARY, RESEARCH, AND INFORMATION TECHNOLOGY CENTER. It is equipped with a leveling ramp and canopy to guard against weather. Please note that the canopy only has a 12' overhead clearance. Full-size trailers will require a 12' loading ramp (*not provided*). Dock doors are 10'x8'. There is room for 2 trucks at dock w/ shore power available. The available height in the loading corridor is 8'-8" and the available width is 6' and requires the navigation of two 90° corners to access the stage. (see venue diagram)



MINIACI PERFORMING ARTS CENTER

Technical Information Rider

STAGE

From apron to the proscenium is maple tongue and groove hardwood floor, supported by a double layer tongue and groove plywood surface, attached to 2x4 sleepers. Stage floor surface from proscenium to upstage wall is “Stagelam” composite material.

Portable 63” Rosco Performance Floor, aka “Marley” available to rent for dance specific programming -- 4 Marley panels that fit from upstage wall, covering downstage just past the proscenium. (Black/Gray)

SEATING CAPACITY

396 Orchestra*

99 Balcony

495 Total*

* Number of seats may change pending relocation of control booth in the fall of 2024.

ALTERNATIVE / REHEARSAL SPACES

Miniaci PAC “Green Room” – 40’- 0”x 27’- 6”, no mirrors/bars and carpeted.

This space is equipped with a small catering area including a sink and refrigerator.

Space is located separately from the backstage area. Please inquire about practical usage.

STAGE INFORMATION

Dimensions

- Grid height 49'
- Proscenium height 19'-8"
- Proscenium width 33'-7"
- Depth of stage 22'-6"
- Stage width (SR to SL wall) 66' – 9"
- Apron (from curtain) 9'
- Apron (with pit up) 16'
- Apron width 43'
- Loading Bridge 22' – 9"x3' @ 44' high
- Lip to back wall 38'-6"
- Viewable / Dance Space 33' 7" x 20' 1"

Orchestra Pit – Quadruple screw drive, Gala Spiralifts elevator platform.

- Pit size (large config.) 21'x39' capacity 55 persons
- Pit size (small config.) 13'x39' capacity 25 persons
- Pendant Control:
 - Center of the lift for maintenance –OR–
 - SR at the Stage Manager’s panel.
- Fixed Speed—too slow for in-show use. *(only to be used for Pit Orchestra and/or storage access.)*

****The Orchestra Pit meets ADA specifications including an off-stage wheelchair lift. ****

MINIACI PERFORMING ARTS CENTER

Technical Information Rider

Rigging

- 23 single purchase counterweight line sets, 7" o.c. w/11' arbors, 2100 lb capacity
- 3 heavy-duty single purchase counterweight electrics, 16" o.c. w/12' arbors, 2300 lb capacity
- 2 single purchase counterweight shell sets, 16" o.c. w/11' arbors, 2100 lb capacity
- 1 heavy-duty single purchase counterweight shell rear wall set, 16" o.c. w/ a dual 11' arbor: 4700 lb capacity
- Pipe battens are 46' & 42'. (42' upstage of lineset #25)

Risers

- (5) Wenger "Signature" 4-step Choral Risers with integrated back safety rail
- STAGING/PLATFORMS: *please confirm with technical staff regarding the use and size of staging.*

SOFT GOODS INVENTORY

Permanent

- 1 rose 25oz. velour main valance 8'x46' @ 100% fullness
- 1 rose 25oz. velour main drape, bi-parting, 26'x48' w/ 2ft. overlap @ 100% fullness
- 2 black 25oz. velour travelers 26'x48' w/ 2ft. overlap @ 0% fullness/flat

Flexible

- 4 pr. black 25 oz. velour legs 26'x8' @ 00% fullness/flat
- 3 black 25oz. velour borders 8'x46' @ 00% fullness/flat
- 1 white sharks tooth scrim 26'x46'
- 1 black sharks tooth scrim 26'x46'
- 1 white Leno seamless cyclorama 25'x40'

ORCHESTRA SHELL | CHAIRS | MUSIC STANDS

Our orchestra shell was manufactured by Wenger and has multiple configuration capabilities.

- 33'-7" wide x 11'-0" deep x 19'-8" high in front and 17'-6" high in the rear
- 33'-7" wide x 19'-6" deep x 19'-8" high in front and 15'-3" high in the rear
- (80) Wenger orchestra chairs
- (10) Wenger cello chairs
- (4) Wenger percussionist chairs
- (1) Wenger conductor's podium
- (1) Wenger conductor's music stand
- (50) Wenger music stands (*incandescent lights are available—please inquire.*)

****MPAC has 6' folding tables and chairs; please discuss in advance.****

MINIACI PERFORMING ARTS CENTER

Technical Information Rider

ELECTRICAL INFORMATION

Dimensional Information

- Curtain line to 40-degree catwalk 36' from stage – Height 38'
- Curtain line to 30-degree catwalk 56' from stage – Height 29'
- Curtain line to Box Boom Torm 55'-4" at 35 deg angle top of pipe - 20'-10" from stage - Height 41'-8"

Power Distribution

- (6) Dedicated 20-amp tie-ins SR near Stage Manger's Stand

Front of House Transfer Panel

- No Company switch currently - DMX in transfer through board or onstage patch bay stage right

Control

- ETC Ion Xe-20 (w/2 Touch-Screen Monitors)
 - WiFi iRFR via iPad for focus and remote needs
- 800 channel capacity / 226 - 2.4k ETC dimmers
- DMX control signal via Belden copper from Gateway 4-Way nodes in control booth
- Unison House Lighting Control (in same DMX Universe-I as Theatrical Sensor Racks)

Electrical Distribution

- (3) Sensor Racks (CEM Classic)

Dimmer	Location
1-24	30-degree catwalk
25-72	40-degree catwalk
73-80	Box boom house left
81-88	Box boom house right
89-118	1st electric
119-148	2nd electric
149-178	3rd electric
179-181	Grid Drop box #4
182-184	Grid Drop box #5
185-187	Grid Drop box #6
188-190	Grid Drop box #7
191-193	Grid Drop box #8
194-196	Grid Drop box #9
197-199	Floor pocket #1
200-202	Floor pocket #2
203-205	Floor pocket #3
206-208	Floor pocket #4
209-211	Floor pocket #5
212-214	Floor pocket #6
215-217	Floor pocket #7
218-220	Floor pocket #8
221-223	Floor pocket #9
224-226	Floor pocket #10

MINIACI PERFORMING ARTS CENTER

Technical Information Rider

ELECTRICS INVENTORY

Spares

- (4) Source Four 25/50 - degree zoom, 575 HPL
- (5) Altman Focusing single ground cyc units 1K per cell
- (10) 2-fers
- (6) 25ft. 20-amp stage pin cables

FOH LIGHTING | HOUSE PLOT

30-Degree Catwalk

- (12) 5-degree Source Four Ellipsoidal, 575 HPL
- (4) 10-degree Source Four Ellipsoidal, 575 HPL
- (2) 2000 Xenon Super Troupers Follow Spots

40-Degree Catwalk

- (25) 10-degree Source Four Ellipsoidal, 575 HPL

Box Booms

- (8) 19-degree Source Four Ellipsoidal, 575 HPL

OVER STAGE | HOUSE PLOT

First Electric

- (8) Source Four pars, 575 HPL
- (10) Source Four 25/50 - degree zoom, 575 HPL
- (5) ETC Color Source Pars
- (2) Solaframe "Theater" Moving Lights by High End Systems/ETC

Second Electric

- (8) Source Four pars, 575 HPL
- (10) Source Four 25/50 - degree zoom, 575 HPL
- (5) ETC Color Source Pars

Third Electric

- (5) Altman Focusing 6-color sky cyc units 1K per cell

MINIACI PERFORMING ARTS CENTER

Technical Information Rider

SOUND / VIDEO INFORMATION

Note: in the fall of 2024 the entire PA system is planned for an upgrade.

House Console

- Midas M32 Digital Console
- Midas DL32 - 32 Input, 16 Output Stage Box with 32 Midas Microphone Preamplifiers, ULTRANET and ADAT Interfaces at SR Stage Manager Panel

Center Cluster

- (4) EAW KF730 - Full Range 3-way compact Line Array Modules.
 - Small Line Array Modules or SLAM Modules
- Loaded with Dual 10" Low Frequency cones mounted on the sides of the enclosure
- One large horn, dual 7" Mid Frequency cones and dual 1" exits
- High Frequency compression drivers.

Right and Left Clusters

- (2) EAW JFX560z (ea) - 2-way multi-use loudspeaker
- Loaded with a 15" woofer and a 1.4" exit
- 3" voice coil compression driver on a 60° x 45° CD horn

House Sub-Woofer

- (2) EAW SB730 – Compact
- Very Low Frequency System specifically designed to fly
- Loaded with two advanced 12" woofers mounted in a “clamshell” driver arrangement

FOH Signal Processing

Our system signal processing is solely controlled by a Bi-Amp Audia system. It consists of 1 Audia Flex module w/ 6 inputs and 18 outputs via CobraNet to an Audia EXPI input module.

Large Lectern

Large Presenter's Lectern with HDMI signal output to the FOH projector for screen/visual presentations; audio output also available with built in mic on lectern.

Monitor System

- (4) JBL SR-X Series SR4702X 12" Two-Way Passive Speaker
- (1) JBL VRX915M 15" Two-Way Passive Stage Monitor
- (2) QSC K12.2 Active Two-Way Speaker
- (1) Samson RSXM10A 800W 10-inch Active Coaxial Stage Monitor
- (2) EAW MKD526 Full Range Dual-Woofer (*front-fill*)
- (2) Crown Macro-Tech 2402 to power stage wedges (4 individual sends)

Mix Positions

FOH center, 4'-6" wide x 4'-6" deep, approximately 24' from the lip of stage (*obtained by removing (2) seats center of orchestra level and is ONLY for rehearsal purposes*) Sound and Lighting control area, center of 30-degree catwalk, 13' wide x 9' deep, approximately 48' from the lip of stage. iPad running Midas M32-Mix can operate as a remote console anywhere in the theatre.

MINIACI PERFORMING ARTS CENTER

Technical Information Rider

*Microphones (**this inventory is in flux—please confirm in advance**)*

- (4) Channels of Shure QLXD Wireless
- (4) Shure QLXD I Body Packs
- (2) Shure QLXD2/Beta58 Handheld
- (2) Shure QLXD/KSM9 Handheld
- (8) Shure SM58
- (8) Shure SM57
- (1) Shure Beta 52a
- (6) Shure WL183 Omnidirectional Lavalier
- (2) Shure WL184 Supercardioid Lavalier
- (6) Shure WL185 Cardioid Lavalier
- (6) Shure WL93 Mini Lavalier
- (4) Shure ULXP wireless handheld SM58 Capsule
- (6) Audio Technica Pro37 Cardioid Condenser
- (2) Audio Technica Pro45 Cardioid Condenser Hanging
- (3) Countryman W6 Omni Single Boom Headset
- (9) Countryman W5 Omni Single Boom Headset

Microphone Stands

- (4) Quiklok A114 tabletop mic stands
- (10) Chrome Atlas MS25 straight stands
- (8) Quiklok A346 tripod boom mic stands

Intercom System

Telex system with single muff headsets, BP-1000 belt packs, wall units in all production support areas

Video System

The center is equipped with a Panasonic DLP model PT-DZ680ULK

Playback is via Windows-11 Laptop. HDMI inputs are located:

1. Production Office
2. Floor pocket on the DSR side of the Pit Lift
3. Backstage Right

Please note that the distribution is via Cat-6a with Kramer Ethernet to HDMI. Please confirm that if a Mac is utilized the OSX will support the conversion. The venue does not maintain Apple video display adapters.

The “house” Projection Screen is 16’0” tall X 28’0” wide and stretched over an aluminum spaceframe. It has both front & rear projection capabilities. It currently is permanently hung on lineset #9

Network Abilities

The university is equipped with guest WiFi or ethernet high-speed internet.

MINIACI PERFORMING ARTS CENTER

Technical Information Rider

DRESSING ROOM & WARDROBE ROOM INFORMATION

Dressing Rooms

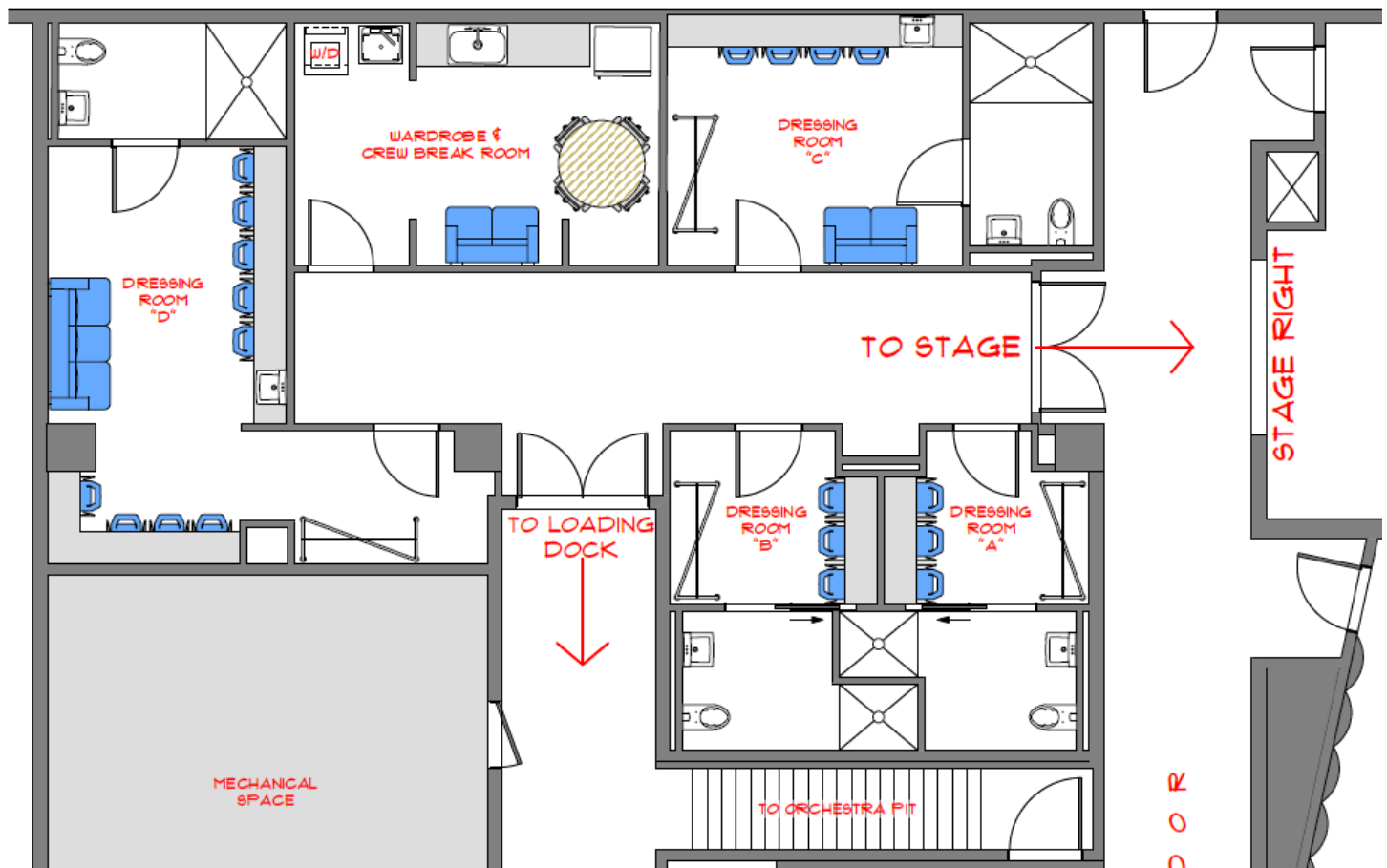
All dressing rooms are located off stage right and equipped with showers, toilets, mirrors, and chairs.

Rooms "A" & "B" at 3 people per dressing room & rooms "C" & "D" at dress 4 ~ 10 per.

Each dressing room has speakers and individual volume control to hear the show program from the theatre.

Wardrobe & Break Room

The wardrobe & break room is located on stage level at the end of the dressing room hallway includes washer/dryer and utility sink. Any show with large wardrobe room needs can be accommodated in the adjacent hallway used primarily as a staging area. The area also serves as the crew break room; refrigerator, sink, Keurig coffee maker, small table and chairs are available for use.



****All dressing rooms meet ADA specifications. ****

MINIACI PERFORMING ARTS CENTER

Technical Information Rider

RIGGING LINESET SCHEDULE

LINE #	POSITION <small>(from plaster line)</small>	HOUSE HANG	SHOW HANG	WEIGHT
FC	0'-3"	Fire Curtain	FIRE CURTAIN	
1	1'-0"	Valance	RED VALANCE	
2	1'-7"	House curtain	RED HOUSE CURTAIN <i>(Guillotine & Traveler in/out)</i>	
3	2'-8"	Legs #1	LEGS #1	
4	3'-5"	1 st Electric	FIRST ELECTRIC	
5	4'-2"	General Purpose		
6	5'-0"	General Purpose		
7	5'-10"	Orchestra Shell #1	ORCHESTRA SHELL CEILING #1	
8	6'-9"	Legs #2	LEGS #2	
9	7'-4"	Projection Screen	PROJECTION SCREEN (FRONT/REAR)	
10	7'-11"	General Purpose		
11	8'-6"	General Purpose		
12	9'-1"	General Purpose		
13	9'-8"	Mid-Stage Traveler	MID-STAGE TRAVELER	
14	10'-3"	Border #1	BORDER #1	
15	10'-10"	Legs #3	LEGS #3	
16	11'-7"	Electric #2	SECOND ELECTRIC	
17	12'-4"	General Purpose		
18	12'-11"	General Purpose		
19	13'-6"	Border #2	BORDER #2	
20	14'-3 1/2"	Orchestra Shell #2	ORCHESTRA SHELL CEILING #2	
21	15'-1"	Legs #4	LEGS #4	
22	15'-9"	Electric #3	THIRD ELECTRIC	
23	16'-6"	General Purpose		
24	17'-1"	Up-Stage Traveler	UP-STAGE TRAVELER	
25	17'-8"	General Purpose		
26	18'-5"	General Purpose		
27	19'-0"	General Purpose		
28	19'-7"	Cyclorama	WHITE CYCLORAMA	
29	20'-4"	Shell Rear Wall	ORCHESTRA SHELL REAR WALL	

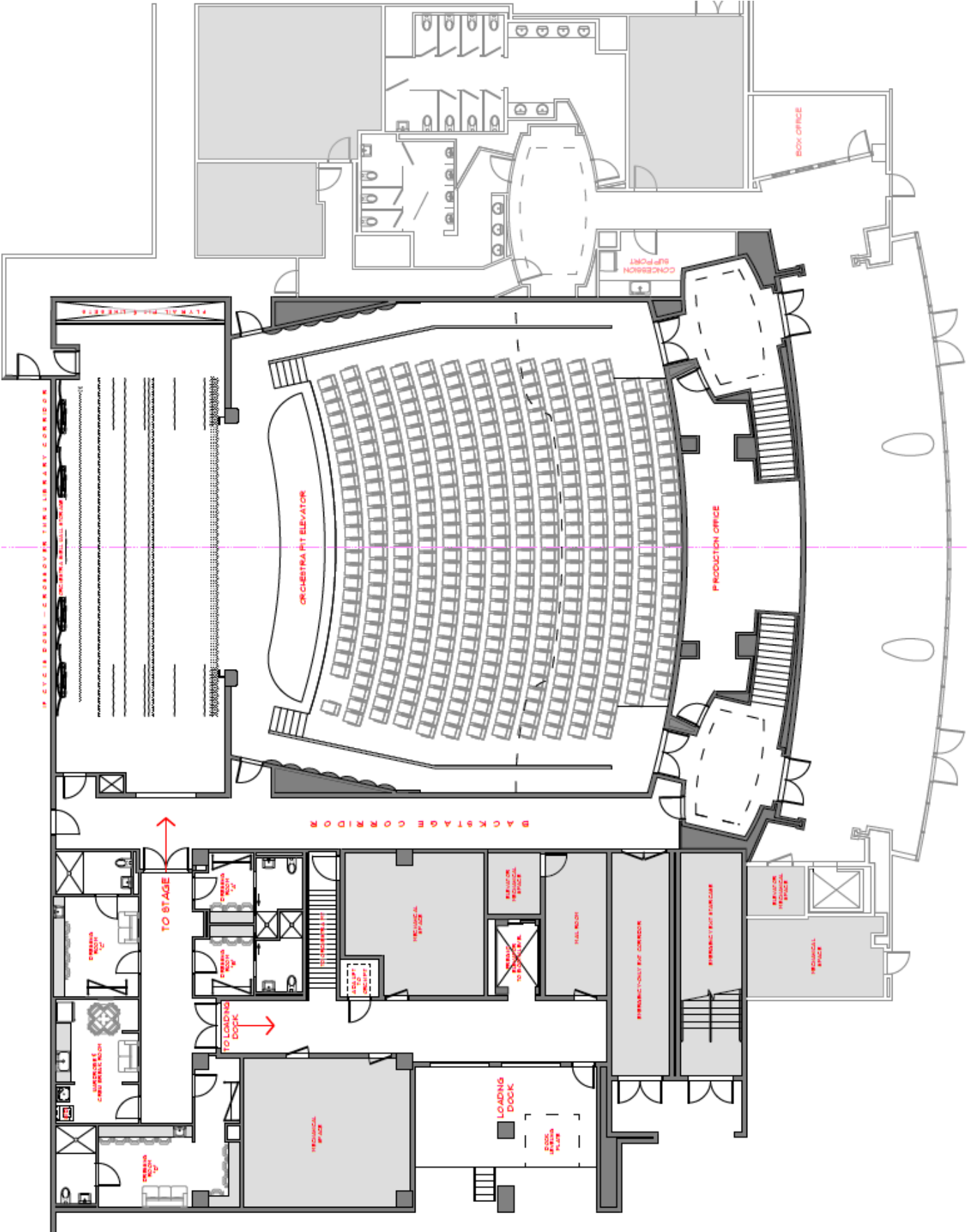
Nova Southeastern University Public Safety

+ 1-954-262-8999

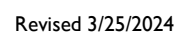
24/7 Emergency Hotline

MINIACI PERFORMING ARTS CENTER

Technical Information Rider



Technical Information Rider



MINIACI PERFORMING ARTS CENTER

Technical Information Rider

